

**PASTURE WALK & FACILITATED DISCUSSION GROUP**

**2019 Schedule**

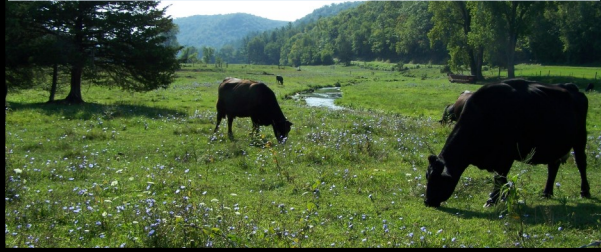
# CRAWFORD COUNTY

Hosted by:

**GREAT RIVER GRAZIERS & KICKAPOO GRAZING INITIATIVE**

For more information, please contact:  
Cynthia Olmstead, KGI Project Director

info@kickapoograzinginitiative.com 608-606-6022



DATE	HOST	LOCATION	TOPIC(S)
TUESDAY MARCH 26 10:30 AM	<b>CHRISTOPHER BAIRD</b> 608-632-1769  12241 State Hwy 27, Ferryville	<b>From Seneca:</b> Take 27 North about 10 miles, go past County Rd C intersection 3/4 mile and farm is on left. Fire #12241.	Overwintering Cattle
TUESDAY JUNE 11 10:30 AM	<b>CLAUDIA BERRES</b>  21602 Berres Lane Richland Center	<b>From Richland Center:</b> Go North on Hwy 80 about 2 miles to County Rd A. Go left on County Rd A 2.3 miles to Berres Lane on right. Turn right to farm.	Claudia is a contract beef grazer and will be looking at water systems, solar pump and water storage systems.
TUESDAY JUNE 25 10:30 AM	<b>DON BOLAND</b> 608-734-3570  18732 Hwy 27 Gays Mills, WI	<b>From Seneca:</b> Travel 3 miles N on 27. Don's farm is on the right, Fire #18732	Managing paddocks: Grass species and sizing paddocks.  <b>Guest Speaker: Nick Baker, UW-Extension, on Meadow Fescue and other perennial forage species.</b>
TUESDAY JULY 9 10:30 AM	<b>CHRISTOPHER BAIRD</b> 608-632-1769  12241 State Hwy 27, Ferryville	<b>From Seneca:</b> Take 27 North about 10 miles, go past County Rd C intersection 3/4 mile and farm is on left. Fire #12241.	Christopher is finishing up an EQIP project installing cattle lanes and watering system for his dairy herd NRCS staff will be available to discuss the EQIP application and installation processes.
TUESDAY AUGUST 13 10:30 AM	<b>AMY FENN</b> 608-445-5592  12041 Severson Rd, Ferryville, WI	<b>From Seneca:</b> Go N about 9 miles to County Rd C. Turn Left for 1 mile to Severson Rd on right. Go right 1.1 miles to 12041.	Year 3: converting woods to silvopasture, designing a forage chain, & adding chickens for fly control
TUESDAY AUGUST 27 10:30 AM	<b>ERIC HAMMELL</b>  18612 Halls Branch Rd Gays Mills, WI	From Mt. Sterling: Go east on State HWY 171 about 1/2 mile to North Halls Branch on right. Turn right and go south 1.25 miles to farm on the left (east) side.	Challenges and successes in using brush management techniques in pastures to improve forage quality and accessibility for cattle.

**WATCH FOR OUR PASTURE WALKS SIGNS!**

Pasture Walks are in Partnership with:



**PASTURE WALK & FACILITATED DISCUSSION  
GROUP (continued) 2019 Schedule**



# CRAWFORD COUNTY

Hosted by:  
**GREAT RIVER GRAZIERS & KICKAPOO GRAZING INITIATIVE**

For more information, please contact:  
Cynthia Olmstead, KGI Project Director

info@kickapoograzinginitiative.com 608-606-6022

DATE	HOST	LOCATION	TOPIC
<b>SATURDAY</b> <b>SEPT 7</b> <b>10:30 AM</b>	<b>JADE &amp; ETHAN PROKSCH</b> 608-483-2476  53830 Newton Road Genoa, WI	<b>From Genoa (Vernon Co):</b> E on 56 approx. 5 mi. Bear left on Newton Rd. 2.8 mi. to farm. Fire # S3830	Rotational Grazing with Goats: A primer for those interested in working with goats and/or mixed species. Flood recovery since last fall.  <b>Guest Speaker: TBA</b>
<b>TUESDAY</b> <b>SEPT 10</b> <b>10:30 AM</b>	<b>MIKE LIND</b>  47664 Aspen Rd Soldiers Grove, WI	<b>From Soldiers Grove:</b> Take County Rd C to Norwegian Hollow Rd. Go right approx. 2 miles to Aspen Rd on left. Go left and look for farm on the right. Fire # 47644.	Mike will discuss silvopasture management (progress since last pasture walk in 2017) and also soil improvement/fertility issues. <b>Co-sponsored by the Savanna Institute, Keefe Keeley</b>
<b>TUESDAY</b> <b>OCTOBER 22</b> <b>10:30 AM</b>	<b>VANCE &amp; OLAF HAUGEN</b> 507-459-3264  12620 Deer Road Canton, MN	<b>Fillmore County:</b> From Decorah IA, take Hwy 52N about 17 miles to the intersection of Hwys 44 & 52. through intersection onto Dove Road. .5 mile to right on Deer Rd. Go 1.5 miles to farm on east side of road. Fire # 12620.	Discussion on evaluation of grazing and pastures for fall and planning for spring. Considerations for Karst geology/water quality in the Driftless region. <b>Co-sponsored by Dairy Grazing Apprenticeship (DGA) with Bonnie Haugen.</b>

**WATCH FOR OUR PASTURE WALKS SIGNS!**



Pasture Walks are in Partnership with:



225 N Beaumont Rd Ste 240  
Prairie du Chien, WI 53821  
608-326-0223 Phone

**UW-Extension Grazing Resources:**

<https://fyi.uwex.edu/grazres>  
<https://crawford.uwex.edu>



See KGI website and Facebook page for updates, cancellations and changes:  
[www.kickapoograzinginitiative.com](http://www.kickapoograzinginitiative.com)



**NO-TILL DRILL**

← **Mike Boland**  
(608) 734-3958

**SPRAYER**

Land Conservation  
(608) 326-0270

